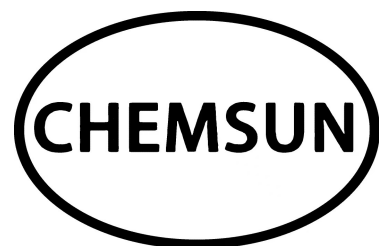
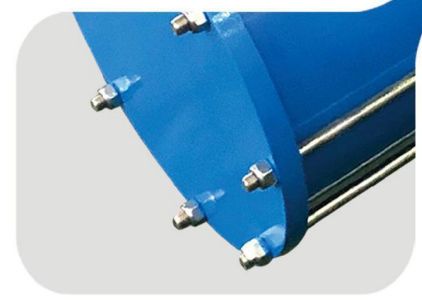
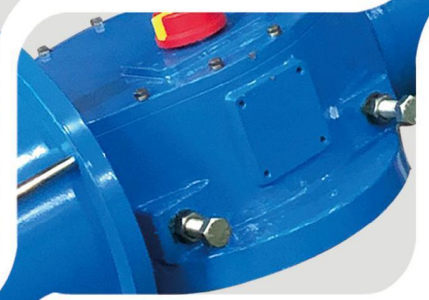
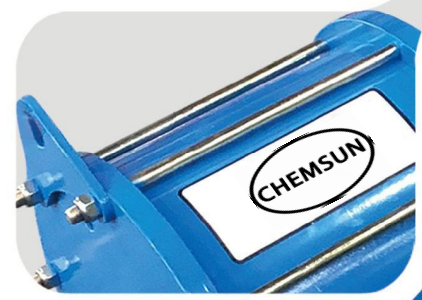
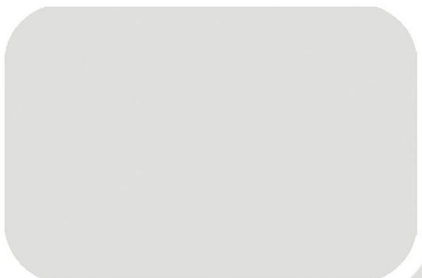


拨叉式 气动执行器

Heavy Duty
Pneumatic Actuator



双作用系列

Double-acting series
Sample figure 实样图



› 单缸双作用

拨叉执行器
是新一代的执行器系列，
性能更可靠，
可达到终身制使用；

Single Cylinder Double Acting

Scotch yoke actuators is a new generation of actuators series, Reliable performance and can be used for life.

› 液压手动双作用

液压手动比起传统的蜗轮手动机构，
操作更轻松，
速度更快捷；



Hydraulic Manual Double Acting

Hydraulic manual compared to traditional turbine hand operation, Easier Operate , Speed is faster;

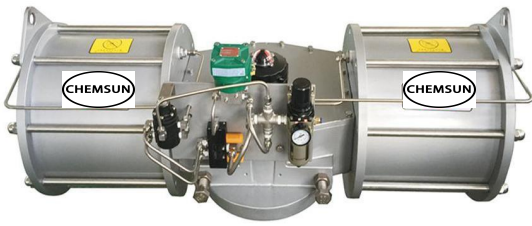


^ 液压调速双作用

液压调速装置
可以弥补气动执行器的缺点，
可实现线速度，
同时可以调节速度的快慢；

Double Acting Hydraulic Speed Adjustment

Hydraulic speed regulating device Can make up shortcomings of pneumatic actuator. Line speed achieved, At the same time adjusted running speed. realize linear speed operation.



▷ 双缸双作用

在单缸的基础上再增加一个气缸，
就可以得到双倍的扭矩，
使成本上更经济；

Double Cylinder Double Acting

On the basis of the single cylinder to add a cylinder,
Get double torque,
Cost cheaper;

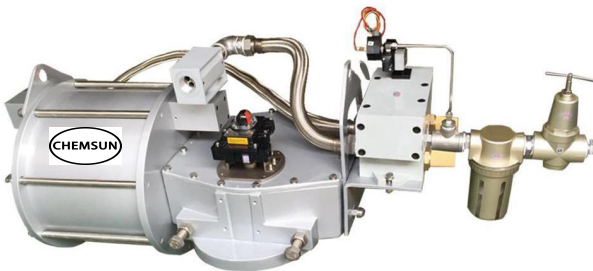


▽ 双缸液压手动双作用

当机器超大扭矩时，
手轮机构亦无法使用时，
液压手动同样可以胜任；

Double Cylinder Hydraulic Manual Double Acting

Encounter large torque,
Hand operation can not using,
Then using hydraulic manual operation;



◁ 外置缓冲双作用

当阀门快速关闭时，
提前5°实现减速状态，
能更好地保证阀门的使用寿命；

External Buffer Double Acting

When valve closing fast ,
5°realize deceleration advance,
Improve valve using time;

单作用系列

Single-acting series
Sample figure 实样图

› 单缸单作用

模块化设计，
组合更方便，
开关位 $\pm 6^\circ$ 可调节；



Single Cylinder Single Acting

Modular design,
Combination more convenient,
Adjusted $\pm 6^\circ$ switch position;

‹ 不锈钢单作用

不锈钢单作用，
在缺少气源的情况下，
可引用管道中的水压
作为动力源；



Stainless Steel Single Acting

Stainless steel single action,
In the absence of air,
Using pipe pressure as
Power source;



^ 液动单作用

液压单作用更节能，
输出力矩大，
体积小；



Hydraulic Single Acting

Hydraulic single acting more energy saving,
Large output torque,
Small volume;



✓ 液压手动单作用

油缸内置于弹簧桶，
空间更紧凑；

Hydraulic Manual Single Action

Hydraulic cylinder placed in spring barrel,
Space configuration more compact;



✓ 双缸单作用

输出力矩更大，
成本更经济；



Double Cylinder Single Acting

Charge output torque
Cost cheaper ;

◁ 三位式侧装手轮单作用

侧装手轮比底部手轮所占空间更小，
操作更轻松；



Single Acting With Side Handwheel

Side handwheel foot print smaller,
More convenient operation;

结构特点

Structural Features



RT系列重载执行器，
通用于一概以90°旋转的阀门。
例如：球阀、蝶阀、旋转阀等其他阀，
用于开关或调节流量的功能。

RT series Heavy Duty actuators, usually used with
90 ° rotating valve. For example: Ball valve,
Butterfly valve, Rotary valves and others,
used in the switch or adjust function of traffic.

RT01系列执行器是对称设计。
在0度与90度时输入扭矩最大。
中间位置输出扭矩最小。
符合球阀类产品的扭矩特性。

RT01 series actuators are symmetrical design.
When 0° to 90° input torque is the largest.
The middle output torque is minimal.
Conform to the torque characteristics
of ball valve products.

RT02系列执行器时采用倾斜设计，
可以输出更大的起始扭矩。
更符合蝶阀类产品的扭矩特性。

RT02 series actuators using canted design,
can output a bigger starting torque.
With the torque characteristics
of butterfly valve products.

缸体内壁采用镀硬铬工艺，
保证更长的使用寿命。

Hard chromium plating on cylinder block,
Ensure longer service.

轨道高频淬火研磨处理，
滑块采用方形自润滑工艺，
能保证长久的使用寿命。

Rail grinding high frequency quenching treatment,
square self lubricating on the slider,
Ensure long service.

RT系列执行器拥有一套完整的安装配件
包括：丝杆手动、液压手动、限位开关、
电磁阀、定位器及其他控制部件。

RT series actuators have
a full installation accessories include: screw manual,
hydraulic manual, limit switch, solenoid valve,
locator and other control components.

模块化设计可在安装、
维修和储存方面提供最大化便利。

Modular design, easy to installation,
maintenance and storage.

性能特点

Performance Features

RT系列单作用执行器可以提供最大120000N.m, 双作用可提供最大240000N.m的扭矩输出。最大工作压力8Bar。

RT spring return actuator can provide 120000n.m torque output, RT double acting actuator can provide 240000n.m torque output. The maximum working pressure is 8 bar.

两个独立的行程调节螺栓, 可以在±6°的范围内调节阀门开关位置。

Two independent travel adjustment bolts, Can be in the range of±6°to regulate valve swith position.

工作温度：低温型 -40℃ ~ 80℃
标准型 -20℃ ~ 80℃
高温型 -20℃ ~ 150℃

Working temperature: Low temperature -40℃~ 80℃
Standard -20℃~ 80℃
High temperature -20℃~150℃

符合IP65以上的防护等级

Comply with IP65 protection class.

模块化设计 Modular Design



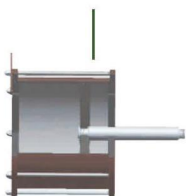
手轮模块
Manual Handwheel

能够针对不同的使用需求, 选择组合动力。
极大地提升了模块化的灵活性, 减少维修与备货成本。

For different application requirements.
Select combination power.
Enhance flexibility modular, reduce maintenance and spare parts.



手轮模块
Manual Handwheel



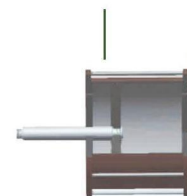
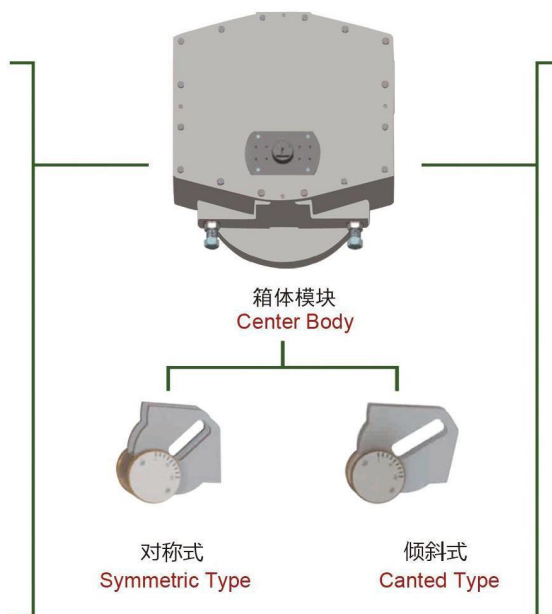
气缸
Cylinder



弹簧
Spring



液压缸
Hydraulic Cylinder



气缸
Cylinder



弹簧
Spring



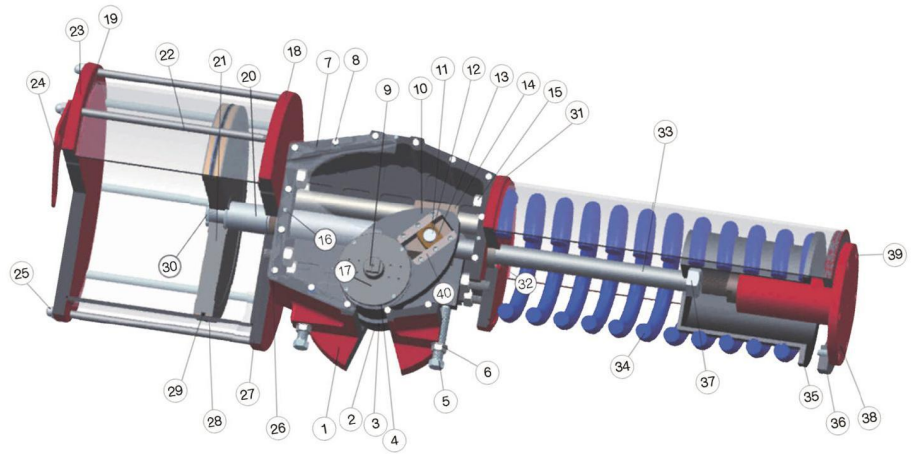
液压缸
Hydraulic Cylinder

材质介绍

Materials

类型材质

DESCRIPTION MATERIALS
产品模型的解剖与分析



- 01,D:Body
M:Nodular Cast Iron
Aluminium Alloy
Forged Steel
箱体
球墨铸铁
铝合金
锻钢
- 02,D:Lower Bushing
M:Low Carbon Steel+Copper Alloy
下轴套
低碳钢 + 合金铜
- 03,D:Bushing O-Ring
M:NBR
密封圈
丁晴橡胶
- 04,D:Upper Bushing
M:Low Carbon Steel+Copper Alloy
上轴套
低碳钢 + 合金铜
- 05,D:Adjusting Bolt
M:Alloy Steel
调节螺栓
合金钢
- 06,D:Adjusting Unt
M:Alloy Steel
调节螺母
合金钢
- 07,D:Body Cover
M:Nodular Cast Iron
Aluminium Alloy
Forged Steel
箱盖
球墨铸铁
铝合金
锻钢
- 08,D:Body Cover Bolt
M:Stainless Steel
箱盖螺栓
不锈钢
- 09,D:Indicator
M:Alloy Steel
指示器
合金钢
- 10,D:Scotch Yoke
M:Nodular Cast Iron
Forged Steel
拨叉
球墨铸铁
锻钢
- 11,D:Axle Bumper
M:Alloy Steel
轴挡
合金钢
- 12,D:Axle Pin
M:Alloy Steel
轴销
合金钢
- 13,D:Sliding Block
M:Alloy Brass
滑块
合金黄铜

- 14,D:Slide Block
M:Alloy Steel
活灵
合金钢
- 15,D:Connecting Bolts
M:Alloy Steel
连接螺栓
合金钢
- 16,D:Pin
M:Alloy Steel
销子
合金钢
- 17,D:Mounting Plate
M:Alloy Steel
安装板
合金钢
- 18,D:Front Cylinder Cover
M:Alloy Steel / Aluminium Alloy
前缸盖
合金钢 / 铝合金
- 19,D:O-Ring
M:NBR
缸盖o型圈
丁晴橡胶
- 20,D:Piston Rod
M:Alloy Steel
活塞杆
合金钢
- 21,D:Piston
M:Alloy Steel / Aluminium Alloy
活塞
合金钢 / 铝合金
- 22,D:Cylinder Rod
M:Alloy Steel / Stainless Steel
气缸拉杆
合金钢 / 不锈钢
- 23,D:Back Cylinder Cover
M:Alloy Steel / Aluminium Alloy
后缸盖
合金钢 / 铝合金
- 24,D:Lifting Plate
M:Alloy Steel
起吊板
合金钢
- 25,D:Rod Nut
M:Alloy Steel / Stainless Steel
栏杆螺母
合金钢 / 不锈钢
- 26,D:Piston Rod Bushing
M:Low Carbon Steel+Copper Alloy
活塞杆衬套
低碳钢 + 合金铜

- 27,D:Front Cylinder Cover O-Rings
M:NBR
前缸盖O型圈
丁晴橡胶
- 28,D:Support Ring
M:Bronze Synthetic Material
支撑圈
青铜合成材料
- 29,D:Piston O-Ring
M:NBR
活塞O型圈
丁晴橡胶
- 30,D:Piston Tight Bolt
M:Alloy Steel
活塞并紧螺母
合金钢
- 31,D:Spring Case Front Cover
M:Alloy Steel
弹簧箱前盖
合金钢
- 32,D:Spring Rod Guide Bushing
M:Alloy Steel
弹簧杆导套
合金钢
- 33,D:Spring God
M:Alloy Brass
弹簧杆
合金黄铜
- 34,D:Spring
M:Spring Steel
弹簧
弹簧钢
- 35,D:Spring Guide Bush
M:Alloy Steel
弹簧导套
合金钢
- 36,D:Spring Case End Cover
M:Alloy Steel
弹簧筒后盖
合金钢
- 37,D:Spring Rod Tight Nut
M:Alloy Steel
弹簧杆锁紧螺母
合金钢
- 38,D:Hydraulic Oil Cylinder
M:Alloy Steel
液压油缸
合金钢
- 39,D:Cover Bolt
M:Alloy Steel / Stainless Steel
封盖螺栓
合金钢 / 不锈钢
- 40,D:Orbital Module
M:Nodular Case Iron
轨道模块
球墨铸铁

型号示意方式：RT01-S02-30A-L-HM-FC



RT 产品型号 Product Model
:双杆导向拨叉式
:Double Guide Rod Scotch Yoke

01 拨叉结构 Scotch Yoke
01.对称式 Symmetrical Type
02.倾斜式 Canted Type

S
作用形式 Acting Type
D:双作用 Double Action
S:单作用 Single Action

02 箱体规格代码：02~08
:Shell Size Code:02~08

30
气缸规格 (mm) :200~1000
:Cylinder Size(mm):200~1000

A/B 弹簧规格 Spring Specification
A:4.2Bar 气源压力 4.2 Bar Air Pressure
B:5.5Bar 气源压力 5.5 Bar Air Pressure

L 温度类型 Temperature Range Option
L:低温型 (-40~80℃)
S:标准型 (-20~80℃)
H:高温型 (-20~150℃)

L: Low Temperature : -40℃~80℃
S: Standard : -20℃~80℃
H: High Temperature : -20℃~150℃

FC 气源故障位置 Air Failure
FO:故障开 Failure Open
FC:故障关 Failure Close
FL:故障保位 Failure Lock

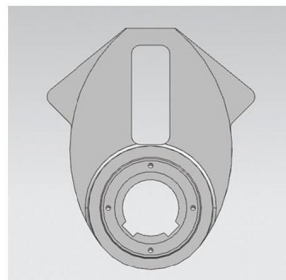
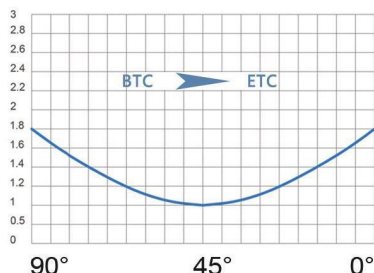
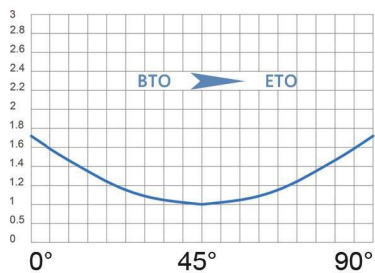
HM 附件 Accessories
SM: 丝杆手动 Screw Manual
GM: 伞齿手动 Gear Manual
HM: 液压手动 Hydraulic Manual

对称扭矩数据

Symmetric Torque Data

对称双作用输出扭矩

Symmetric Double Acting



| 型号 MODEL | 4.0Bar | | | 5.0Bar | | | 6.0Bar | | | 7.0Bar | | |
|--------------|--------|--------|--------|--------|--------|--------|--------|--------|--------|--------|--------|--------|
| | 0° | R° | 90° | 0° | R° | 90° | 0° | R° | 90° | 0° | R° | 90° |
| RT01-D01-18 | 1041 | 578 | 1002 | 1301 | 723 | 1252 | 1561 | 867 | 1502 | 1822 | 1012 | 1753 |
| RT01-D01-20 | 1285 | 714 | 1246 | 1606 | 892 | 1557 | 1928 | 1071 | 1869 | 2249 | 1249 | 2180 |
| RT01-D01-25 | 2008 | 1115 | 1969 | 2510 | 1394 | 2461 | 3012 | 1673 | 2953 | 3514 | 1952 | 3445 |
| RT01-D02-25 | 2631 | 1462 | 2546 | 3289 | 1827 | 3182 | 3947 | 2193 | 3819 | 4604 | 2558 | 4455 |
| RT01-D02-30 | 3789 | 2105 | 3703 | 4736 | 2631 | 4629 | 5683 | 3157 | 5555 | 6630 | 3683 | 6481 |
| RT01-D02-35 | 5157 | 2865 | 5072 | 6446 | 3581 | 6339 | 7735 | 4297 | 7607 | 9024 | 5014 | 8875 |
| RT01-D03-35 | 6446 | 3581 | 6257 | 8057 | 4476 | 7821 | 9669 | 5372 | 9385 | 11280 | 6267 | 10949 |
| RT01-D03-38 | 7598 | 4221 | 7409 | 9498 | 5277 | 9261 | 11398 | 6332 | 11113 | 13297 | 7387 | 12966 |
| RT01-D03-43 | 9729 | 5405 | 9540 | 12162 | 6757 | 11925 | 14594 | 8108 | 14310 | 17027 | 9459 | 16695 |
| RT01-D04-43 | 12085 | 6714 | 11765 | 15106 | 8392 | 14706 | 18128 | 10071 | 17647 | 21149 | 11749 | 20588 |
| RT01-D04-48 | 15059 | 8366 | 14739 | 18824 | 10458 | 18423 | 22588 | 12549 | 22108 | 26353 | 14641 | 25793 |
| RT01-D04-53 | 18360 | 10200 | 18039 | 22949 | 12750 | 22549 | 27539 | 15300 | 27059 | 32129 | 17850 | 31569 |
| RT01-D05-53 | 22560 | 12534 | 22167 | 28201 | 15667 | 27709 | 33841 | 18800 | 33250 | 39481 | 21934 | 38792 |
| RT01-D05-58 | 27018 | 15010 | 26624 | 33772 | 18762 | 33280 | 40527 | 22515 | 39937 | 47281 | 26267 | 46593 |
| RT01-D05-63 | 31877 | 17709 | 31483 | 39846 | 22137 | 39354 | 47815 | 26564 | 47225 | 55785 | 30992 | 55096 |
| RT01-D05-68 | 37138 | 20632 | 36744 | 46422 | 25790 | 45930 | 55706 | 30948 | 55116 | 64991 | 36106 | 64302 |
| RT01-D06-68 | 46614 | 25897 | 45798 | 58268 | 32371 | 57247 | 69921 | 38845 | 68696 | 81575 | 45319 | 80146 |
| RT01-D06-73 | 53721 | 29845 | 52905 | 67151 | 37306 | 66131 | 80582 | 44768 | 79357 | 94012 | 52229 | 92583 |
| RT01-D06-80 | 64518 | 35843 | 63701 | 80647 | 44804 | 79627 | 96777 | 53765 | 95552 | 112906 | 62726 | 111477 |
| RT01-D06-85 | 72835 | 40464 | 72018 | 91043 | 50580 | 90023 | 109252 | 60695 | 108027 | 127460 | 70811 | 126032 |
| RT01-D07-80 | 85078 | 47266 | 83749 | 106348 | 59082 | 104686 | 127618 | 70899 | 125624 | 148887 | 82715 | 146561 |
| RT01-D07-90 | 107677 | 59821 | 106348 | 134597 | 74776 | 132935 | 161516 | 89731 | 159522 | 188435 | 104686 | 186109 |
| RT01-D07-100 | 132935 | 73853 | 131606 | 166169 | 92316 | 164507 | 199403 | 110779 | 197409 | 232636 | 129242 | 230310 |
| RT01-D08-100 | 177247 | 98470 | 175102 | 221558 | 123088 | 218878 | 265870 | 147706 | 262653 | 310182 | 172323 | 306429 |
| RT01-D08-120 | 255235 | 141797 | 253091 | 319044 | 177247 | 316363 | 382853 | 212696 | 379636 | 446662 | 248145 | 442909 |

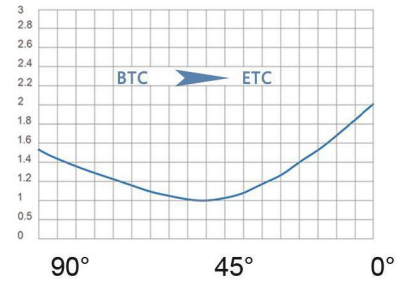
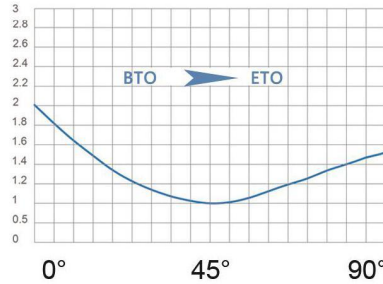
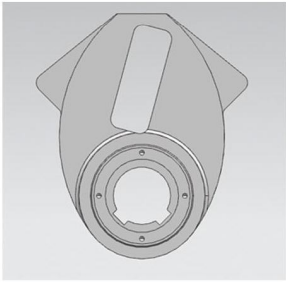
以上数据仅供参考，最终以双方确认图纸为准。 Data For Reference, The Final Object With Customer Confirmation.

倾斜扭矩数据

Canted Torque Ddte

倾斜双作用输出扭矩

Canted Double Acting

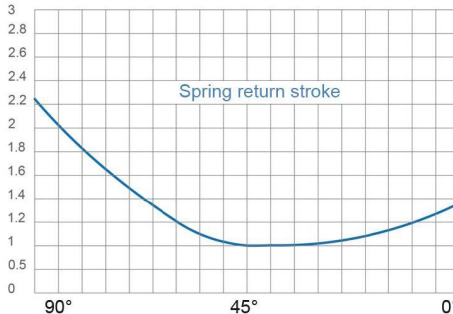
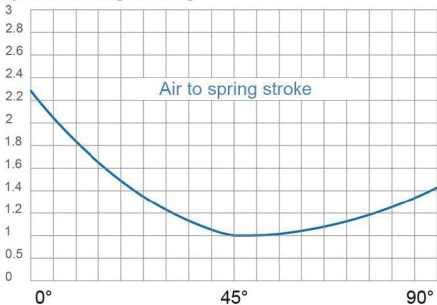


| 型号 MODEL | 4.0Bar | | | 5.0Bar | | | 6.0Bar | | | 7.0Bar | | |
|--------------|--------|--------|--------|--------|--------|--------|--------|--------|--------|--------|--------|--------|
| | 0° | R° | 90° | 0° | R° | 90° | 0° | R° | 90° | 0° | R° | 90° |
| RT02-D01-18 | 1249 | 578 | 886 | 1561 | 723 | 1108 | 1874 | 867 | 1329 | 2186 | 1012 | 1551 |
| RT02-D01-20 | 1542 | 714 | 1102 | 1928 | 892 | 1378 | 2313 | 1071 | 1654 | 2699 | 1249 | 1929 |
| RT02-D01-25 | 2409 | 1115 | 1742 | 3012 | 1394 | 2178 | 3614 | 1673 | 2613 | 4217 | 1952 | 3049 |
| RT02-D02-25 | 3157 | 1462 | 2253 | 3947 | 1827 | 2816 | 4736 | 2193 | 3379 | 5525 | 2558 | 3943 |
| RT02-D02-30 | 4546 | 2105 | 3277 | 5683 | 2631 | 4097 | 6820 | 3157 | 4916 | 7956 | 3683 | 5735 |
| RT02-D02-35 | 6188 | 2865 | 4488 | 7735 | 3581 | 5610 | 9282 | 4297 | 6732 | 10829 | 5014 | 7854 |
| RT02-D03-35 | 7735 | 3581 | 5537 | 9669 | 4476 | 6921 | 11603 | 5372 | 8305 | 13537 | 6267 | 9689 |
| RT02-D03-38 | 9118 | 4221 | 6557 | 11398 | 5277 | 8196 | 13677 | 6332 | 9835 | 15957 | 7387 | 11474 |
| RT02-D03-43 | 11675 | 5405 | 8443 | 14594 | 6757 | 10553 | 17513 | 8108 | 12664 | 20432 | 9459 | 14774 |
| RT02-D04-43 | 14502 | 6714 | 10411 | 18128 | 8392 | 13014 | 21753 | 10071 | 15617 | 25379 | 11749 | 18220 |
| RT02-D04-48 | 18071 | 8366 | 13043 | 22588 | 10458 | 16304 | 27106 | 12549 | 19565 | 31624 | 14641 | 22825 |
| RT02-D04-53 | 22031 | 10200 | 15964 | 27539 | 12750 | 19955 | 33047 | 15300 | 23946 | 38555 | 17850 | 27937 |
| RT02-D05-53 | 27073 | 12534 | 19617 | 33841 | 15667 | 24521 | 40609 | 18800 | 29425 | 47377 | 21934 | 34329 |
| RT02-D05-58 | 32422 | 15010 | 23561 | 40527 | 18762 | 29452 | 48632 | 22515 | 35342 | 56738 | 26267 | 41232 |
| RT02-D05-63 | 38252 | 17709 | 27861 | 47815 | 22137 | 34827 | 57379 | 26564 | 41792 | 66942 | 30992 | 48758 |
| RT02-D05-68 | 44565 | 20632 | 32517 | 55706 | 25790 | 40646 | 66848 | 30948 | 48775 | 77989 | 36106 | 56905 |
| RT02-D06-68 | 55937 | 25897 | 40529 | 69921 | 32371 | 50661 | 83905 | 38845 | 60793 | 97890 | 45319 | 70925 |
| RT02-D06-73 | 64465 | 29845 | 46818 | 80582 | 37306 | 58523 | 96698 | 44768 | 70227 | 112814 | 52229 | 81932 |
| RT02-D06-80 | 77421 | 35843 | 56373 | 96777 | 44804 | 70466 | 116132 | 53765 | 84559 | 135487 | 62726 | 98652 |
| RT02-D06-85 | 87401 | 40464 | 63733 | 109252 | 50580 | 79666 | 131102 | 60695 | 95599 | 152953 | 70811 | 111532 |
| RT02-D07-80 | 102094 | 47266 | 74114 | 127618 | 59082 | 92643 | 153141 | 70899 | 111171 | 178665 | 82715 | 129700 |
| RT02-D07-90 | 129213 | 59821 | 94113 | 161516 | 74776 | 117642 | 193819 | 89731 | 141170 | 226123 | 104686 | 164698 |
| RT02-D07-100 | 159522 | 73853 | 116465 | 199403 | 92316 | 145582 | 239283 | 110779 | 174698 | 279164 | 129242 | 203814 |
| RT02-D08-100 | 212696 | 98470 | 154958 | 265870 | 123088 | 193697 | 319044 | 147706 | 232436 | 372218 | 172323 | 271176 |
| RT02-D08-120 | 306282 | 141797 | 223974 | 382853 | 177247 | 279967 | 459423 | 212696 | 335961 | 535994 | 248145 | 391954 |

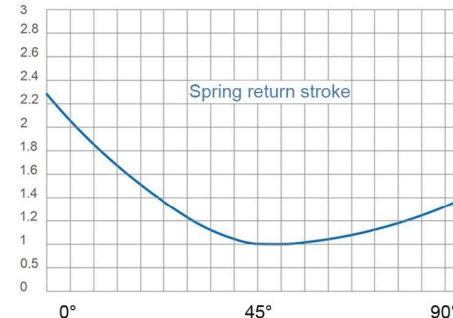
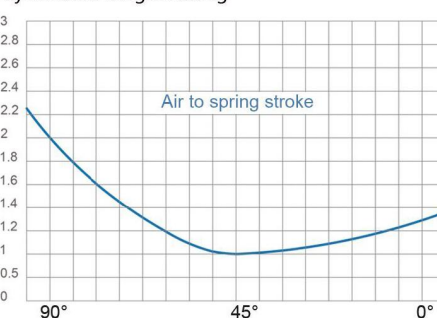
以上数据仅供参考，最终以双方确认图纸为准。Dates For Reference ,The Final Object With Customer Confirmation.

曲线图 Curve chart

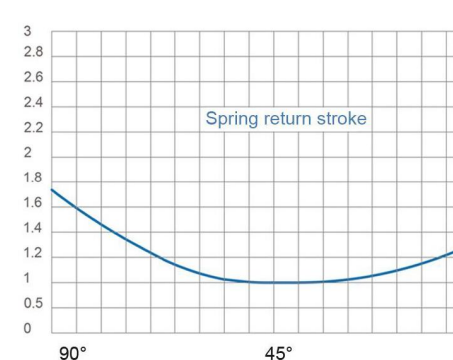
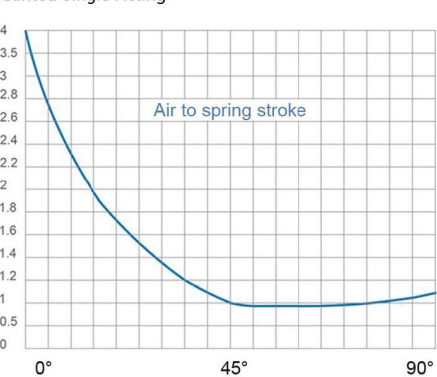
对称单作用输出扭矩FC
Symmetric Single Acting



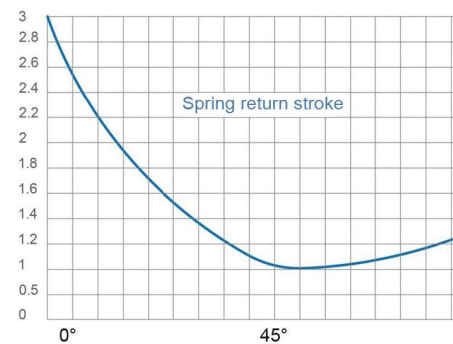
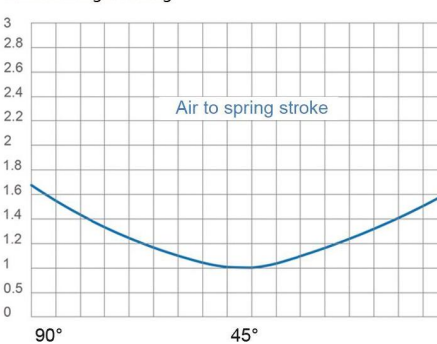
对称单作用输出扭矩FO
Symmetric Single Acting



倾斜单作用输出扭矩FC
Canted Single Acting



倾斜单作用输出扭矩FO
Canted Single Acting



以上数据仅供参考，最终以双方确认图纸为准。 Dates For Reference ,The Final Object With Customer Confirmation.

对称单作用输出扭矩(FC) Symmetric Single Acting

| 型号 MODEL | 弹簧扭矩 | | | 气源压力 | | | | | | | | | | | | |
|--------------|------|--------|-------|--------|--------|-------|--------|--------|--------|--------|--------|--------|--------|--------|--------|--------|
| | | | | 4.0Bar | | | 5.0Bar | | | 6.0Bar | | | 7.0Bar | | | |
| | 0° | R° | 90° | 0° | R° | 90° | 0° | R° | 90° | 0° | R° | 90° | 0° | R° | 90° | |
| RT01-S01-18 | A | 390 | 289 | 651 | 611 | 267 | 351 | 862 | 406 | 601 | 1112 | 545 | 852 | 1362 | 685 | 1102 |
| | B | 488 | 361 | 813 | | | | 764 | 334 | 439 | 1014 | 473 | 689 | 1265 | 612 | 939 |
| RT01-S01-20 | A | 482 | 357 | 803 | 764 | 335 | 443 | 1075 | 508 | 754 | 1387 | 681 | 1065 | 1698 | 854 | 1377 |
| | B | 602 | 446 | 1004 | | | | 955 | 419 | 553 | 1266 | 592 | 865 | 1578 | 765 | 1176 |
| RT01-S01-25 | A | 753 | 558 | 1255 | 1216 | 536 | 714 | 1708 | 809 | 1206 | 2200 | 1083 | 1698 | 2692 | 1356 | 2190 |
| | B | 941 | 697 | 1569 | | | | 1519 | 670 | 892 | 2012 | 943 | 1384 | 2504 | 1217 | 1876 |
| RT01-S02-25 | A | 987 | 731 | 1644 | 1559 | 683 | 901 | 2196 | 1037 | 1538 | 2832 | 1391 | 2174 | 3468 | 1744 | 2811 |
| | B | 1233 | 914 | 2055 | | | | 1949 | 854 | 1127 | 2585 | 1208 | 1763 | 3222 | 1562 | 2400 |
| RT01-S02-30 | A | 1421 | 1052 | 2368 | 2283 | 1005 | 1335 | 3209 | 1519 | 2261 | 4134 | 2034 | 3187 | 5060 | 2548 | 4113 |
| | B | 1776 | 1316 | 2960 | | | | 2853 | 1256 | 1669 | 3779 | 1771 | 2595 | 4705 | 2285 | 3521 |
| RT01-S02-35 | A | 1934 | 1432 | 3223 | 3138 | 1385 | 1849 | 4406 | 2089 | 3116 | 5674 | 2794 | 4384 | 6941 | 3498 | 5652 |
| | B | 2417 | 1791 | 4029 | | | | 3922 | 1731 | 2311 | 5190 | 2436 | 3579 | 6458 | 3140 | 4846 |
| RT01-S03-35 | A | 2417 | 1791 | 4029 | 3839 | 1685 | 2228 | 5403 | 2554 | 3792 | 6968 | 3423 | 5356 | 8532 | 4292 | 6920 |
| | B | 3022 | 2238 | 5036 | | | | 4799 | 2107 | 2785 | 6363 | 2976 | 4349 | 7927 | 3845 | 5913 |
| RT01-S03-38 | A | 2849 | 2111 | 4749 | 4560 | 2005 | 2660 | 6412 | 3034 | 4512 | 8264 | 4063 | 6364 | 10116 | 5092 | 8217 |
| | B | 3562 | 2638 | 5936 | | | | 5699 | 2507 | 3325 | 7552 | 3536 | 5177 | 9404 | 4565 | 7029 |
| RT01-S03-43 | A | 3649 | 2703 | 6081 | 5891 | 2597 | 3459 | 8276 | 3922 | 5844 | 10661 | 5247 | 8229 | 13047 | 6572 | 10614 |
| | B | 4561 | 3378 | 7601 | | | | 7364 | 3247 | 4324 | 9749 | 4572 | 6709 | 12134 | 5897 | 9094 |
| RT01-S04-43 | A | 4532 | 3357 | 7553 | 7233 | 3179 | 4212 | 10174 | 4813 | 7153 | 13115 | 6447 | 10094 | 16056 | 8081 | 13035 |
| | B | 5665 | 4196 | 9441 | | | | 9041 | 3974 | 5265 | 11982 | 5608 | 8206 | 14923 | 7242 | 11147 |
| RT01-S04-48 | A | 5647 | 4183 | 9412 | 9092 | 4005 | 5327 | 12776 | 6052 | 9011 | 16461 | 8099 | 12696 | 20146 | 10146 | 16381 |
| | B | 7059 | 5229 | 11765 | | | | 11364 | 5006 | 6659 | 15049 | 7053 | 10343 | 18734 | 9100 | 14028 |
| RT01-S04-53 | A | 6885 | 5100 | 11475 | 11154 | 4922 | 6565 | 15664 | 7427 | 11074 | 20174 | 9933 | 15584 | 24684 | 12438 | 20094 |
| | B | 8606 | 6375 | 14343 | | | | 13943 | 6152 | 8206 | 18453 | 8658 | 12716 | 22963 | 11163 | 17225 |
| RT01-S05-53 | A | 8460 | 6267 | 14100 | 13707 | 6048 | 8067 | 19248 | 9127 | 13608 | 24790 | 12206 | 19150 | 30332 | 15284 | 24692 |
| | B | 10575 | 7833 | 17625 | | | | 17133 | 7560 | 10083 | 22675 | 10639 | 15625 | 28217 | 13718 | 21167 |
| RT01-S05-58 | A | 10132 | 7505 | 16886 | 16493 | 7286 | 9738 | 23149 | 10984 | 16394 | 29805 | 14682 | 23050 | 36461 | 18380 | 29706 |
| | B | 12665 | 9381 | 21108 | | | | 20616 | 9108 | 12173 | 27272 | 12806 | 18829 | 33928 | 16504 | 25485 |
| RT01-S05-63 | A | 11954 | 8855 | 19923 | 19530 | 8636 | 11560 | 27400 | 13009 | 19431 | 35271 | 17381 | 27302 | 43142 | 21754 | 35173 |
| | B | 14942 | 11068 | 24904 | | | | 24412 | 10795 | 14450 | 32283 | 15168 | 22321 | 40154 | 19541 | 30192 |
| RT01-S05-68 | A | 13927 | 10316 | 23211 | 22817 | 10097 | 13533 | 32003 | 15201 | 22719 | 41190 | 20304 | 31905 | 50376 | 25407 | 41091 |
| | B | 17408 | 12895 | 29014 | | | | 28522 | 12622 | 16916 | 37708 | 17725 | 26102 | 46894 | 22828 | 35288 |
| RT01-S06-68 | A | 17480 | 12948 | 29134 | 28317 | 12495 | 16664 | 39767 | 18855 | 28113 | 51216 | 25216 | 39563 | 62665 | 31577 | 51012 |
| | B | 21850 | 16185 | 36417 | | | | 35397 | 15618 | 20830 | 46846 | 21979 | 32279 | 58295 | 28340 | 43728 |
| RT01-S06-73 | A | 20145 | 14923 | 33576 | 32759 | 14469 | 19329 | 45985 | 21817 | 32555 | 59211 | 29165 | 45781 | 72438 | 36512 | 59007 |
| | B | 25182 | 18653 | 41970 | | | | 40949 | 18086 | 24161 | 54175 | 25434 | 37387 | 67401 | 32782 | 50613 |
| RT01-S06-80 | A | 24194 | 17922 | 40324 | 39507 | 17468 | 23378 | 55432 | 26315 | 39303 | 71358 | 35163 | 55228 | 87283 | 44010 | 71154 |
| | B | 30243 | 22402 | 50405 | | | | 49384 | 21835 | 29222 | 65309 | 30682 | 45147 | 81234 | 39530 | 61073 |
| RT01-S06-85 | A | 27313 | 20232 | 45522 | 44705 | 19778 | 26496 | 62710 | 29781 | 44501 | 80714 | 39783 | 62505 | 98719 | 49786 | 80510 |
| | B | 34141 | 25290 | 56902 | | | | 55881 | 24723 | 33121 | 73886 | 34725 | 51125 | 91890 | 44728 | 69130 |
| RT01-S07-80 | A | 31904 | 23633 | 53174 | 51845 | 22894 | 30575 | 72782 | 34526 | 51512 | 93719 | 46158 | 72450 | 114656 | 57790 | 93387 |
| | B | 39881 | 29541 | 66468 | | | | 64806 | 28618 | 38219 | 85743 | 40250 | 59156 | 106680 | 51882 | 80093 |
| RT01-S07-90 | A | 40379 | 29910 | 67298 | 65969 | 29172 | 39050 | 92556 | 43942 | 65637 | 119143 | 58713 | 92224 | 145730 | 73484 | 118811 |
| | B | 50474 | 37388 | 84123 | | | | 82461 | 36465 | 48812 | 109048 | 51235 | 75399 | 135635 | 66006 | 101986 |
| RT01-S07-100 | A | 49851 | 36926 | 83084 | 81755 | 36188 | 48521 | 114656 | 54466 | 81423 | 147558 | 72745 | 114324 | 180459 | 91024 | 147226 |
| | B | 62313 | 46158 | 103856 | | | | 102194 | 45235 | 60652 | 135095 | 63513 | 93553 | 167997 | 81792 | 126454 |
| RT01-S08-100 | A | 66468 | 49235 | 110779 | 108635 | 48044 | 64323 | 152410 | 72363 | 108098 | 196186 | 96683 | 151874 | 239961 | 121003 | 195649 |
| | B | 83084 | 61544 | 138474 | | | | 135793 | 60055 | 80404 | 179569 | 84374 | 124179 | 223344 | 108694 | 167955 |
| RT01-S08-120 | A | 95713 | 70899 | 159522 | 157377 | 69707 | 93569 | 220650 | 104859 | 156841 | 283923 | 140010 | 220114 | 347195 | 175162 | 283386 |
| | B | 119642 | 88623 | 199403 | | | | 196722 | 87134 | 116961 | 259994 | 122285 | 180233 | 323267 | 157437 | 243506 |

以上数据仅供参考，最终以双方确认图纸为准。Dates For Reference ,The Final Object With Customer Confirmation.

对称单作用输出扭矩 (FO)

Symmetric Single Acting

| 型号 MODEL | 弹簧扭矩 | | | 气源压力 | | | | | | | | | | | | |
|--------------|------|--------|-------|--------|-------|-------|--------|--------|--------|--------|--------|--------|--------|--------|--------|--------|
| | | | | 4.0Bar | | | 5.0Bar | | | 6.0Bar | | | 7.0Bar | | | |
| | 0° | R° | 90° | 0° | R° | 90° | 0° | R° | 90° | 0° | R° | 90° | 0° | R° | 90° | |
| RT01-S01-18 | A | 651 | 289 | 390 | 351 | 267 | 611 | 601 | 406 | 862 | 852 | 545 | 1112 | 1102 | 685 | 1362 |
| | B | 813 | 361 | 488 | | | | 439 | 334 | 764 | 689 | 473 | 1014 | 939 | 612 | 1265 |
| RT01-S01-20 | A | 803 | 357 | 482 | 443 | 335 | 764 | 754 | 508 | 1075 | 1065 | 681 | 1387 | 1377 | 854 | 1698 |
| | B | 1004 | 446 | 602 | | | | 553 | 419 | 955 | 865 | 592 | 1266 | 1176 | 765 | 1578 |
| RT01-S01-25 | A | 1255 | 558 | 753 | 714 | 536 | 1216 | 1206 | 809 | 1708 | 1698 | 1083 | 2200 | 2190 | 1356 | 2692 |
| | B | 1569 | 697 | 941 | | | | 892 | 670 | 1519 | 1384 | 943 | 2012 | 1876 | 1217 | 2504 |
| RT01-S02-25 | A | 1644 | 731 | 987 | 901 | 683 | 1559 | 1538 | 1037 | 2196 | 2174 | 1391 | 2832 | 2811 | 1744 | 3468 |
| | B | 2055 | 914 | 1233 | | | | 1127 | 854 | 1949 | 1763 | 1208 | 2585 | 2400 | 1562 | 3222 |
| RT01-S02-30 | A | 2368 | 1052 | 1421 | 1335 | 1005 | 2283 | 2261 | 1519 | 3209 | 3187 | 2034 | 4134 | 4113 | 2548 | 5060 |
| | B | 2960 | 1316 | 1776 | | | | 1669 | 1256 | 2853 | 2595 | 1771 | 3779 | 3521 | 2285 | 4705 |
| RT01-S02-35 | A | 3223 | 1432 | 1934 | 1849 | 1385 | 3138 | 3116 | 2089 | 4406 | 4384 | 2794 | 5674 | 5652 | 3498 | 6941 |
| | B | 4029 | 1791 | 2417 | | | | 2311 | 1731 | 3922 | 3579 | 2436 | 5190 | 4846 | 3140 | 6458 |
| RT01-S03-35 | A | 4029 | 1791 | 2417 | 2228 | 1685 | 3839 | 3792 | 2554 | 5403 | 5356 | 3423 | 6968 | 6920 | 4292 | 8532 |
| | B | 5036 | 2238 | 3022 | | | | 2785 | 2107 | 4799 | 4349 | 2976 | 6363 | 5913 | 3845 | 7927 |
| RT01-S03-38 | A | 4749 | 2111 | 2849 | 2660 | 2005 | 4560 | 4512 | 3034 | 6412 | 6364 | 4063 | 8264 | 8217 | 5092 | 10116 |
| | B | 5936 | 2638 | 3562 | | | | 3325 | 2507 | 5699 | 5177 | 3536 | 7552 | 7029 | 4565 | 9404 |
| RT01-S03-43 | A | 6081 | 2703 | 3649 | 3459 | 2597 | 5891 | 5844 | 3922 | 8276 | 8229 | 5247 | 10661 | 10614 | 6572 | 13047 |
| | B | 7601 | 3378 | 4561 | | | | 4324 | 3247 | 7364 | 6709 | 4572 | 9749 | 9094 | 5897 | 12134 |
| RT01-S04-43 | A | 7553 | 3357 | 4532 | 4212 | 3179 | 7233 | 7153 | 4813 | 10174 | 10094 | 6447 | 13115 | 13035 | 8081 | 16056 |
| | B | 9441 | 4196 | 5665 | | | | 5265 | 3974 | 9041 | 8206 | 5608 | 11982 | 11147 | 7242 | 14923 |
| RT01-S04-48 | A | 9412 | 4183 | 5647 | 5327 | 4005 | 9092 | 9011 | 6052 | 12776 | 12696 | 8099 | 16461 | 16381 | 10146 | 20146 |
| | B | 11765 | 5229 | 7059 | | | | 6659 | 5006 | 11364 | 10343 | 7053 | 15049 | 14028 | 9100 | 18734 |
| RT01-S04-53 | A | 11475 | 5100 | 6885 | 6565 | 4922 | 11154 | 11074 | 7427 | 15664 | 15584 | 9933 | 20174 | 20094 | 12438 | 24684 |
| | B | 14343 | 6375 | 8606 | | | | 8206 | 6152 | 13943 | 12716 | 8658 | 18453 | 17225 | 11163 | 22963 |
| RT01-S05-53 | A | 14100 | 6267 | 8460 | 8067 | 6048 | 13707 | 13608 | 9127 | 19248 | 19150 | 12206 | 24790 | 24692 | 15284 | 30332 |
| | B | 17625 | 7833 | 10575 | | | | 10083 | 7560 | 17133 | 15625 | 10639 | 22675 | 21167 | 13718 | 28217 |
| RT01-S05-58 | A | 16886 | 7505 | 10132 | 9738 | 7286 | 16493 | 16394 | 10984 | 23149 | 23050 | 14682 | 29805 | 29706 | 18380 | 36461 |
| | B | 21108 | 9381 | 12665 | | | | 12173 | 9108 | 20616 | 18829 | 12806 | 27272 | 25485 | 16504 | 33928 |
| RT01-S05-63 | A | 19923 | 8855 | 11954 | 11560 | 8636 | 19530 | 19431 | 13009 | 27400 | 27302 | 17381 | 35271 | 35173 | 21754 | 43142 |
| | B | 24904 | 11068 | 14942 | | | | 14450 | 10795 | 24412 | 22321 | 15168 | 32283 | 30192 | 19541 | 40154 |
| RT01-S05-68 | A | 23211 | 10316 | 13927 | 13533 | 10097 | 22817 | 22719 | 15201 | 32003 | 31905 | 20304 | 41190 | 41091 | 25407 | 50376 |
| | B | 29014 | 12895 | 17408 | | | | 16916 | 12622 | 28522 | 26102 | 17725 | 37708 | 35288 | 22828 | 46894 |
| RT01-S06-68 | A | 29134 | 12948 | 17480 | 16664 | 12495 | 28317 | 28113 | 18855 | 39767 | 39563 | 25216 | 51216 | 51012 | 31577 | 62665 |
| | B | 36417 | 16185 | 21850 | | | | 20830 | 15618 | 35397 | 32279 | 21979 | 46846 | 43728 | 28340 | 58295 |
| RT01-S06-73 | A | 33576 | 14923 | 20145 | 19329 | 14469 | 32759 | 32555 | 21817 | 45985 | 45781 | 29165 | 59211 | 59007 | 36512 | 72438 |
| | B | 41970 | 18653 | 25182 | | | | 24161 | 18086 | 40949 | 37387 | 25434 | 54175 | 50613 | 32782 | 67401 |
| RT01-S06-80 | A | 40324 | 17922 | 24194 | 23378 | 17468 | 39507 | 39303 | 26315 | 55432 | 55228 | 35163 | 71358 | 71154 | 44010 | 87283 |
| | B | 50405 | 22402 | 30243 | | | | 29222 | 21835 | 49384 | 45147 | 30682 | 65309 | 61073 | 39530 | 81234 |
| RT01-S06-85 | A | 45522 | 20232 | 27313 | 26496 | 19778 | 44705 | 44501 | 29781 | 62710 | 62505 | 39783 | 80714 | 80510 | 49786 | 98719 |
| | B | 56902 | 25290 | 34141 | | | | 33121 | 24723 | 55881 | 51125 | 34725 | 73886 | 69130 | 44728 | 91890 |
| RT01-S07-80 | A | 53174 | 23633 | 31904 | 30575 | 22894 | 51845 | 51512 | 34526 | 72782 | 72450 | 46158 | 93719 | 93387 | 57790 | 114656 |
| | B | 66468 | 29541 | 39881 | | | | 38219 | 28618 | 64806 | 59156 | 40250 | 85743 | 80093 | 51882 | 106680 |
| RT01-S07-90 | A | 67298 | 29910 | 40379 | 39050 | 29172 | 65969 | 65637 | 43942 | 92556 | 92224 | 58713 | 119143 | 118811 | 73484 | 145730 |
| | B | 84123 | 37388 | 50474 | | | | 48812 | 36465 | 82461 | 75399 | 51235 | 109048 | 101986 | 66006 | 135635 |
| RT01-S07-100 | A | 83084 | 36926 | 49851 | 48521 | 36188 | 81755 | 81423 | 54466 | 114656 | 114324 | 72745 | 147558 | 147226 | 91024 | 180459 |
| | B | 103856 | 46158 | 62313 | | | | 60652 | 45235 | 102194 | 93553 | 63513 | 135095 | 126454 | 81792 | 167997 |
| RT01-S08-100 | A | 110779 | 49235 | 66468 | 64323 | 48044 | 108635 | 108098 | 72363 | 152410 | 151874 | 96683 | 196186 | 195649 | 121003 | 239961 |
| | B | 138474 | 61544 | 83084 | | | | 80404 | 60055 | 135793 | 124179 | 84374 | 179569 | 167955 | 108694 | 223344 |
| RT01-S08-120 | A | 159522 | 70899 | 95713 | 93569 | 69707 | 157377 | 156841 | 104859 | 220650 | 220114 | 140010 | 283923 | 283386 | 175162 | 347195 |
| | B | 199403 | 88623 | 119642 | | | | 116961 | 87134 | 196722 | 180233 | 122285 | 259994 | 243506 | 157437 | 323267 |

以上数据仅供参考，最终以双方确认图纸为准。 Dates For Reference . The Final Object With Customer Confirmation.

倾斜单作用输出扭矩 (FC)

Canted Single Acting

| 型号 MODEL | 弹簧扭矩 | | | 气源压力 | | | | | | | | | | | | |
|--------------|------|--------|--------|--------|--------|-------|--------|--------|-------|--------|--------|--------|--------|--------|--------|--------|
| | | | | 4.0Bar | | | 5.0Bar | | | 6.0Bar | | | 7.0Bar | | | |
| | 0° | R° | 90° | 0° | R° | 90° | 0° | R° | 90° | 0° | R° | 90° | 0° | R° | 90° | |
| RT02-S01-18 | A | 562 | 401 | 691 | 687 | 178 | 195 | 999 | 322 | 417 | 1312 | 467 | 639 | 1624 | 611 | 860 |
| | B | 703 | 501 | 864 | | | | 859 | 222 | 244 | 1171 | 366 | 466 | 1483 | 511 | 687 |
| RT02-S01-20 | A | 694 | 495 | 853 | 848 | 219 | 249 | 1234 | 398 | 525 | 1619 | 576 | 801 | 2005 | 755 | 1076 |
| | B | 867 | 618 | 1066 | | | | 1060 | 274 | 312 | 1446 | 452 | 587 | 1831 | 631 | 863 |
| RT02-S01-25 | A | 1084 | 773 | 1333 | 1325 | 342 | 409 | 1928 | 621 | 845 | 2530 | 900 | 1280 | 3132 | 1179 | 1716 |
| | B | 1355 | 966 | 1666 | | | | 1656 | 428 | 512 | 2259 | 707 | 947 | 2861 | 986 | 1383 |
| RT02-S02-25 | A | 1421 | 1013 | 1746 | 1736 | 449 | 507 | 2526 | 814 | 1070 | 3315 | 1180 | 1633 | 4104 | 1545 | 2196 |
| | B | 1776 | 1266 | 2183 | | | | 2171 | 561 | 633 | 2960 | 926 | 1197 | 3749 | 1292 | 1760 |
| RT02-S02-30 | A | 2046 | 1459 | 2515 | 2501 | 646 | 763 | 3637 | 1172 | 1582 | 4774 | 1699 | 2401 | 5910 | 2225 | 3221 |
| | B | 2557 | 1823 | 3143 | | | | 3126 | 808 | 953 | 4262 | 1334 | 1773 | 5399 | 1860 | 2592 |
| RT02-S02-35 | A | 2785 | 1985 | 3423 | 3403 | 880 | 1065 | 4951 | 1596 | 2187 | 6498 | 2312 | 3309 | 8045 | 3028 | 4431 |
| | B | 3481 | 2482 | 4278 | | | | 4254 | 1099 | 1332 | 5801 | 1816 | 2454 | 7348 | 2532 | 3576 |
| RT02-S03-35 | A | 3481 | 2482 | 4278 | 4254 | 1099 | 1258 | 6188 | 1995 | 2643 | 8122 | 2890 | 4027 | 10056 | 3785 | 5411 |
| | B | 4351 | 3102 | 5348 | | | | 5318 | 1374 | 1573 | 7252 | 2270 | 2957 | 9185 | 3165 | 4341 |
| RT02-S03-38 | A | 4103 | 2925 | 5043 | 5015 | 1296 | 1513 | 7294 | 2351 | 3153 | 9574 | 3407 | 4792 | 11853 | 4462 | 6431 |
| | B | 5129 | 3657 | 6304 | | | | 6269 | 1620 | 1892 | 8548 | 2675 | 3531 | 10828 | 3731 | 5170 |
| RT02-S03-43 | A | 5254 | 3746 | 6458 | 6421 | 1659 | 1985 | 9340 | 3011 | 4096 | 12259 | 4362 | 6206 | 15178 | 5713 | 8317 |
| | B | 6567 | 4682 | 8072 | | | | 8027 | 2074 | 2481 | 10946 | 3426 | 4592 | 13864 | 4777 | 6702 |
| RT02-S04-43 | A | 6526 | 4653 | 8021 | 7976 | 2061 | 2390 | 11602 | 3740 | 4993 | 15227 | 5418 | 7596 | 18853 | 7097 | 10199 |
| | B | 8157 | 5816 | 10026 | | | | 9970 | 2576 | 2988 | 13596 | 4255 | 5591 | 17221 | 5933 | 8193 |
| RT02-S04-48 | A | 8132 | 5798 | 9995 | 9939 | 2568 | 3048 | 14457 | 4660 | 6309 | 18974 | 6751 | 9570 | 23492 | 8843 | 12830 |
| | B | 10165 | 7247 | 12494 | | | | 12424 | 3210 | 3810 | 16941 | 5302 | 7071 | 21459 | 7393 | 10332 |
| RT02-S04-53 | A | 9914 | 7068 | 12186 | 12117 | 3131 | 3778 | 17625 | 5681 | 7769 | 23133 | 8231 | 11760 | 28641 | 10781 | 15751 |
| | B | 12393 | 8836 | 15232 | | | | 15147 | 3914 | 4723 | 20654 | 6464 | 8714 | 26162 | 9014 | 12705 |
| RT02-S05-53 | A | 12183 | 8686 | 14974 | 14890 | 3848 | 4643 | 21658 | 6981 | 9547 | 28426 | 10115 | 14451 | 35194 | 13248 | 19356 |
| | B | 15228 | 10857 | 18717 | | | | 18612 | 4810 | 5804 | 25381 | 7943 | 10708 | 32149 | 11077 | 15612 |
| RT02-S05-58 | A | 14590 | 10402 | 17932 | 17832 | 4608 | 5629 | 25937 | 8361 | 11520 | 34043 | 12113 | 17410 | 42148 | 15866 | 23300 |
| | B | 18237 | 13002 | 22415 | | | | 22290 | 5760 | 7036 | 30395 | 9513 | 12927 | 38501 | 13265 | 18817 |
| RT02-S05-63 | A | 17214 | 12273 | 21157 | 21039 | 5437 | 6704 | 30602 | 9864 | 13670 | 40165 | 14292 | 20635 | 49728 | 18719 | 27600 |
| | B | 21517 | 15341 | 26447 | | | | 26299 | 6796 | 8380 | 35862 | 11223 | 15346 | 45425 | 15651 | 22311 |
| RT02-S05-68 | A | 20054 | 14298 | 24649 | 24511 | 6334 | 7868 | 35652 | 11492 | 15997 | 46793 | 16650 | 24126 | 57935 | 21808 | 32256 |
| | B | 25068 | 17872 | 30811 | | | | 30639 | 7918 | 9835 | 41780 | 13076 | 17964 | 52921 | 18234 | 26093 |
| RT02-S06-68 | A | 25172 | 17946 | 30939 | 30765 | 7950 | 9590 | 44750 | 14424 | 19722 | 58734 | 20899 | 29855 | 72718 | 27373 | 39987 |
| | B | 31465 | 22433 | 38673 | | | | 38457 | 9938 | 11988 | 52441 | 16412 | 22120 | 66425 | 22886 | 32252 |
| RT02-S06-73 | A | 29009 | 20683 | 35656 | 35456 | 9162 | 11163 | 51572 | 16624 | 22867 | 67689 | 24085 | 34572 | 83805 | 31546 | 46276 |
| | B | 36262 | 25853 | 44570 | | | | 44320 | 11453 | 13953 | 60436 | 18914 | 25658 | 76553 | 26376 | 37362 |
| RT02-S06-80 | A | 34840 | 24839 | 42822 | 42582 | 11004 | 13551 | 61937 | 19965 | 27644 | 81292 | 28925 | 41738 | 100648 | 37886 | 55831 |
| | B | 43550 | 31049 | 53527 | | | | 53227 | 13755 | 16939 | 72583 | 22716 | 31032 | 91938 | 31676 | 45125 |
| RT02-S06-85 | A | 39331 | 28041 | 48342 | 48071 | 12422 | 15391 | 69921 | 22538 | 31324 | 91772 | 32654 | 47258 | 113622 | 42770 | 63191 |
| | B | 49163 | 35052 | 60427 | | | | 60089 | 15528 | 19239 | 81939 | 25644 | 35172 | 103789 | 35760 | 51105 |
| RT02-S07-80 | A | 45942 | 32755 | 56468 | 56152 | 14511 | 17646 | 81675 | 26327 | 36175 | 107199 | 38143 | 54703 | 132722 | 49960 | 73232 |
| | B | 57428 | 40944 | 70585 | | | | 70190 | 18138 | 22058 | 95713 | 29955 | 40586 | 121237 | 41771 | 59115 |
| RT02-S07-90 | A | 58146 | 41456 | 71467 | 71067 | 18365 | 22646 | 103370 | 33320 | 46174 | 135674 | 48275 | 69703 | 167977 | 63231 | 93231 |
| | B | 72682 | 51820 | 89334 | | | | 88834 | 22956 | 28308 | 121137 | 37911 | 51836 | 153440 | 52867 | 75364 |
| RT02-S07-100 | A | 71785 | 51180 | 88231 | 87737 | 22673 | 28234 | 127618 | 41136 | 57350 | 167498 | 59599 | 86467 | 207379 | 78062 | 115583 |
| | B | 89731 | 63975 | 110289 | | | | 109671 | 28341 | 35292 | 149552 | 46804 | 64409 | 189432 | 65267 | 93525 |
| RT02-S08-100 | A | 95713 | 68240 | 117642 | 116983 | 30230 | 37316 | 170157 | 54848 | 76055 | 223331 | 79466 | 114795 | 276505 | 104083 | 153534 |
| | B | 119642 | 85300 | 147052 | | | | 146229 | 37788 | 46645 | 199403 | 62406 | 85384 | 252577 | 87023 | 124124 |
| RT02-S08-120 | A | 137827 | 98266 | 169404 | 168455 | 43532 | 54570 | 245026 | 78981 | 110564 | 321596 | 114430 | 166557 | 398167 | 149880 | 222551 |
| | B | 172284 | 122832 | 211755 | | | | 210569 | 54415 | 68213 | 287140 | 89864 | 124206 | 363710 | 125313 | 180200 |

以上数据仅供参考，最终以双方确认图纸为准。Dates For Reference ,The Final Object With Customer Confirmation.

倾斜单作用输出扭矩 (FO)

Canted Single Acting

| 型号MODEL | | 弹簧扭矩 | | | 气源压力 | | | | | | | | | | | |
|--------------|---|--------|-------|-------|--------|-------|--------|--------|--------|--------|--------|--------|--------|--------|--------|--------|
| | | | | | 4.0Bar | | | 5.0Bar | | | 6.0Bar | | | 7.0Bar | | |
| | | 0° | R° | 90° | 0° | R° | 90° | 0° | R° | 90° | 0° | R° | 90° | 0° | R° | 90° |
| RT02-S01-18 | A | 566 | 181 | 250 | 683 | 397 | 636 | 996 | 541 | 858 | 1308 | 686 | 1079 | 1620 | 831 | 1301 |
| | B | 707 | 227 | 313 | | | | 854 | 496 | 795 | 1166 | 641 | 1017 | 1479 | 785 | 1238 |
| RT02-S01-20 | A | 698 | 224 | 309 | 844 | 490 | 793 | 1229 | 668 | 1069 | 1615 | 847 | 1345 | 2000 | 1025 | 1620 |
| | B | 873 | 280 | 386 | | | | 1055 | 612 | 992 | 1440 | 791 | 1267 | 1826 | 969 | 1543 |
| RT02-S01-25 | A | 1091 | 350 | 483 | 1318 | 766 | 1259 | 1921 | 1044 | 1695 | 2523 | 1323 | 2130 | 3125 | 1602 | 2566 |
| | B | 1364 | 437 | 604 | | | | 1648 | 957 | 1574 | 2250 | 1236 | 2010 | 2852 | 1515 | 2445 |
| RT02-S02-25 | A | 1430 | 459 | 633 | 1727 | 1003 | 1620 | 2517 | 1369 | 2183 | 3306 | 1734 | 2747 | 4095 | 2099 | 3310 |
| | B | 1787 | 573 | 791 | | | | 2159 | 1254 | 2025 | 2948 | 1619 | 2588 | 3738 | 1985 | 3152 |
| RT02-S02-30 | A | 2059 | 660 | 911 | 2487 | 1445 | 2366 | 3624 | 1971 | 3186 | 4761 | 2497 | 4005 | 5897 | 3023 | 4824 |
| | B | 2574 | 825 | 1139 | | | | 3109 | 1806 | 2958 | 4246 | 2332 | 3777 | 5382 | 2858 | 4597 |
| RT02-S02-35 | A | 2803 | 899 | 1240 | 3386 | 1966 | 3248 | 4933 | 2682 | 4370 | 6480 | 3399 | 5492 | 8027 | 4115 | 6614 |
| | B | 3503 | 1123 | 1550 | | | | 4232 | 2458 | 4060 | 5779 | 3174 | 5182 | 7326 | 3890 | 6304 |
| RT02-S03-35 | A | 3503 | 1123 | 1550 | 4232 | 2458 | 3987 | 6166 | 3353 | 5371 | 8099 | 4248 | 6755 | 10033 | 5144 | 8139 |
| | B | 4379 | 1404 | 1938 | | | | 5290 | 3072 | 4983 | 7224 | 3967 | 6367 | 9157 | 4863 | 7752 |
| RT02-S03-38 | A | 4130 | 1324 | 1827 | 4988 | 2897 | 4729 | 7268 | 3952 | 6368 | 9547 | 5008 | 8008 | 11827 | 6063 | 9647 |
| | B | 5162 | 1655 | 2284 | | | | 6236 | 3621 | 5912 | 8515 | 4677 | 7551 | 10795 | 5732 | 9190 |
| RT02-S03-43 | A | 5288 | 1696 | 2340 | 6388 | 3710 | 6103 | 9306 | 5061 | 8213 | 12225 | 6412 | 10324 | 15144 | 7764 | 12435 |
| | B | 6610 | 2120 | 2925 | | | | 7985 | 4637 | 7628 | 10903 | 5988 | 9739 | 13822 | 7340 | 11850 |
| RT02-S04-43 | A | 6568 | 2106 | 2906 | 7934 | 4608 | 7505 | 11560 | 6286 | 10108 | 15185 | 7965 | 12711 | 18811 | 9643 | 15314 |
| | B | 8210 | 2633 | 3633 | | | | 9918 | 5760 | 9381 | 13543 | 7438 | 11984 | 17169 | 9117 | 14587 |
| RT02-S04-48 | A | 8184 | 2624 | 3621 | 9886 | 5742 | 9422 | 14404 | 7833 | 12682 | 18922 | 9925 | 15943 | 23439 | 12016 | 19204 |
| | B | 10230 | 3280 | 4527 | | | | 12358 | 7177 | 11777 | 16876 | 9269 | 15038 | 21393 | 11360 | 18299 |
| RT02-S04-53 | A | 9978 | 3200 | 4415 | 12053 | 7000 | 11549 | 17561 | 9550 | 15540 | 23069 | 12100 | 19531 | 28577 | 14650 | 23522 |
| | B | 12473 | 4000 | 5519 | | | | 15067 | 8750 | 14436 | 20575 | 11300 | 18427 | 26083 | 13850 | 22418 |
| RT02-S05-53 | A | 12261 | 3932 | 5425 | 14811 | 8602 | 14191 | 21580 | 11735 | 19096 | 28348 | 14869 | 24000 | 35116 | 18002 | 28904 |
| | B | 15326 | 4915 | 6782 | | | | 18514 | 10752 | 17739 | 25282 | 13886 | 22644 | 32051 | 17019 | 27548 |
| RT02-S05-58 | A | 14684 | 4709 | 6497 | 17738 | 10301 | 17064 | 25843 | 14054 | 22955 | 33949 | 17806 | 28845 | 42054 | 21559 | 34735 |
| | B | 18355 | 5886 | 8121 | | | | 22172 | 12877 | 21330 | 30278 | 16629 | 27221 | 38383 | 20382 | 33111 |
| RT02-S05-63 | A | 17324 | 5555 | 7666 | 20928 | 12154 | 20196 | 30491 | 16581 | 27161 | 40054 | 21009 | 34127 | 49617 | 25436 | 41092 |
| | B | 21656 | 6944 | 9582 | | | | 26160 | 15193 | 25245 | 35723 | 19620 | 32210 | 45286 | 24047 | 39175 |
| RT02-S05-68 | A | 20183 | 6472 | 8931 | 24382 | 14160 | 23586 | 35523 | 19318 | 31715 | 46664 | 24476 | 39845 | 57806 | 29634 | 47974 |
| | B | 25229 | 8090 | 11163 | | | | 30477 | 17700 | 29483 | 41618 | 22858 | 37612 | 52760 | 28016 | 45741 |
| RT02-S06-68 | A | 25334 | 8124 | 11210 | 30603 | 17773 | 29319 | 44587 | 24247 | 39451 | 58572 | 30721 | 49584 | 72556 | 37196 | 59716 |
| | B | 31667 | 10155 | 14012 | | | | 38254 | 22216 | 36649 | 52238 | 28690 | 46781 | 66222 | 35165 | 56913 |
| RT02-S06-73 | A | 29196 | 9362 | 12919 | 35269 | 20483 | 33900 | 51385 | 27944 | 45604 | 67502 | 35405 | 57309 | 83618 | 42867 | 69013 |
| | B | 36495 | 11703 | 16148 | | | | 44086 | 25604 | 42374 | 60203 | 33065 | 54079 | 76319 | 40526 | 65784 |
| RT02-S06-80 | A | 35064 | 11244 | 15515 | 42357 | 24599 | 40858 | 61713 | 33560 | 54951 | 81068 | 42521 | 69044 | 100423 | 51482 | 83137 |
| | B | 43830 | 14055 | 19394 | | | | 52947 | 30749 | 51072 | 72302 | 39710 | 65165 | 91657 | 48671 | 79259 |
| RT02-S06-85 | A | 39584 | 12693 | 17515 | 47817 | 27770 | 46218 | 69668 | 37886 | 62151 | 91518 | 48002 | 78084 | 113369 | 58118 | 94017 |
| | B | 49480 | 15867 | 21894 | | | | 59772 | 34713 | 57772 | 81622 | 44829 | 73705 | 103473 | 54945 | 89638 |
| RT02-S07-80 | A | 46238 | 14827 | 20459 | 55856 | 32439 | 53655 | 81379 | 44255 | 72183 | 106903 | 56072 | 90712 | 132426 | 67888 | 109240 |
| | B | 57798 | 18534 | 25574 | | | | 69820 | 40548 | 67069 | 95343 | 52365 | 85597 | 120867 | 64181 | 104126 |
| RT02-S07-90 | A | 58520 | 18766 | 25894 | 70693 | 41055 | 68219 | 102996 | 56010 | 91748 | 135299 | 70966 | 115276 | 167602 | 85921 | 138804 |
| | B | 73150 | 23457 | 32367 | | | | 88366 | 51319 | 85274 | 120669 | 66274 | 108803 | 152972 | 81229 | 132331 |
| RT02-S07-100 | A | 72247 | 23167 | 31968 | 87275 | 50685 | 84497 | 127155 | 69149 | 113614 | 167036 | 87612 | 142730 | 206916 | 106075 | 171846 |
| | B | 90309 | 28959 | 39960 | | | | 109093 | 63357 | 105622 | 148974 | 81820 | 134738 | 188854 | 100283 | 163854 |
| RT02-S08-100 | A | 96330 | 30890 | 42624 | 116366 | 67581 | 112334 | 169540 | 92198 | 151073 | 222714 | 116816 | 189813 | 275888 | 141433 | 228552 |
| | B | 120412 | 38612 | 53280 | | | | 145458 | 84476 | 140417 | 198632 | 109093 | 179157 | 251806 | 133711 | 217896 |
| RT02-S08-120 | A | 138715 | 44481 | 61378 | 167568 | 97316 | 162596 | 244138 | 132765 | 218589 | 320709 | 168215 | 274583 | 397279 | 203664 | 330576 |
| | B | 173394 | 55602 | 76723 | | | | 209459 | 121645 | 203245 | 286030 | 157094 | 259238 | 362601 | 192544 | 315232 |

以上数据仅供参考，最终以双方确认图纸为准。Dates For Reference ,The Final Object With Customer Confirmation.



RT系列耗气量参数/RT Series Air Consumption

| 型号 Size | 开向体积 (L) Volume opening | 关向体积 (L) Volume closing | 型号 Size | 开向体积 (L) Volume opening | 关向体积 (L) Volume closing |
|-------------------|----------------------------|----------------------------|-------------------|----------------------------|----------------------------|
| RT01/RT02-S01-18 | 3.12 | 3.25 | RT01/RT02-D01-18 | 3.3 | 3.1 |
| RT01/RT02-S01-20 | 3.88 | 4.01 | RT01/RT02-D01-20 | 4.1 | 3.7 |
| RT01/RT02-S01-25 | 6.15 | 6.26 | RT01/RT02-D01-25 | 6.35 | 6.1 |
| RT01/RT02-S02-25 | 8.4 | 8.7 | RT01/RT02-D02-25 | 8.8 | 8.4 |
| RT01/RT02-S02-30 | 12.2 | 12.5 | RT01/RT02-D02-30 | 12.9 | 12.1 |
| RT01/RT02-S02-35 | 16.7 | 17 | RT01/RT02-D02-35 | 17.6 | 16.5 |
| RT01/RT02-S03-35 | 20 | 20.6 | RT01/RT02-D03-35 | 21.4 | 20.3 |
| RT01/RT02-S03-38 | 23.7 | 24.3 | RT01/RT02-D03-38 | 25.3 | 23.9 |
| RT01/RT02-S03-43 | 30.6 | 31.2 | RT01/RT02-D03-43 | 32.6 | 30.6 |
| RT01/RT02-S04-43 | 38.8 | 40 | RT01/RT02-D04-43 | 42.4 | 38.8 |
| RT01/RT02-S04-48 | 48.6 | 49.7 | RT01/RT02-D04-48 | 53.1 | 48.4 |
| RT01/RT02-S04-53 | 59.5 | 60.6 | RT01/RT02-D04-53 | 65 | 59.1 |
| RT01/RT02-S05-53 | 72.6 | 74.3 | RT01/RT02-D05-53 | 79.7 | 71.9 |
| RT01/RT02-S05-58 | 87.3 | 89 | RT01/RT02-D05-58 | 95.8 | 86.2 |
| RT01/RT02-S05-63 | 103.3 | 105 | RT01/RT02-D05-63 | 113.4 | 101.6 |
| RT01/RT02-S05-68 | 115 | 115.8 | RT01/RT02-D05-68 | 120 | 113 |
| RT01/RT02-S06-68 | 149 | 151 | RT01/RT02-D06-68 | 164 | 145 |
| RT01/RT02-S06-73 | 172 | 175 | RT01/RT02-D06-73 | 189 | 167 |
| RT01/RT02-S07-68 | 198 | 202 | RT01/RT02-D07-68 | 216 | 194 |
| RT01/RT02-S06-80 | 199 | 201 | RT01/RT02-D06-80 | 216 | 195 |
| RT01/RT02-S06-85 | 225 | 227 | RT01/RT02-D06-85 | 242 | 220 |
| RT01/RT02-S07-80 | 276 | 280 | RT01/RT02-D07-80 | 301 | 268 |
| RT01/RT02-S07-90 | 332 | 335 | RT01/RT02-D07-90 | 355 | 327 |
| RT01/RT02-S07-100 | 410 | 445 | RT01/RT02-D07-100 | 466 | 405 |
| RT01/RT02-S08-100 | 577 | 584 | RT01/RT02-D08-100 | 624 | 557 |
| RT01/RT02-S08-120 | 790 | 796 | RT01/RT02-D08-120 | 818 | 783 |

备注：表中数据为单次动作所需的最大消耗气体体积。
单作用=开向；双作用=开向+关向

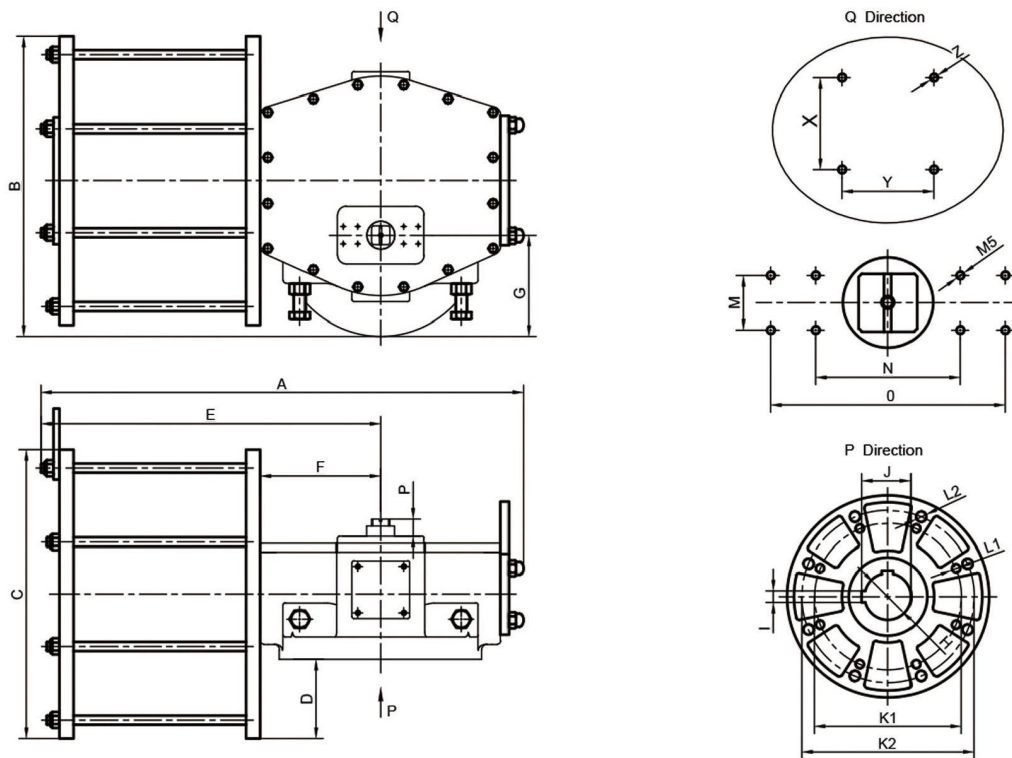
RT系列重量表/RT Series Weight Table

| 型号(单作用) Model (Single action) | 重量 (kg) Weight (kg) | 型号(双作用) Model (Double action) | 重量 (kg) Weight (kg) |
|----------------------------------|------------------------|----------------------------------|------------------------|
| RT01/RT02-S01-18 | 68 | RT01/RT02-S01-18 | 38 |
| RT01/RT02-S01-20 | 76 | RT01/RT02-S01-20 | 42 |
| RT01/RT02-S01-25 | 85 | RT01/RT02-S01-25 | 45 |
| RT01/RT02-S02-25 | 102 | RT01/RT02-D02-25 | 53 |
| RT01/RT02-S02-30 | 140 | RT01/RT02-D02-30 | 61 |
| RT01/RT02-S02-35 | 190 | RT01/RT02-D02-35 | 205 |
| RT01/RT02-S03-35 | 281 | RT01/RT02-D03-35 | 210 |
| RT01/RT02-S03-38 | 340 | RT01/RT02-D03-38 | 235 |
| RT01/RT02-S03-43 | 380 | RT01/RT02-D03-43 | 260 |
| RT01/RT02-S04-43 | 490 | RT01/RT02-D04-43 | 355 |
| RT01/RT02-S04-48 | 550 | RT01/RT02-D04-48 | 389 |
| RT01/RT02-S04-53 | 640 | RT01/RT02-D04-53 | 375 |
| RT01/RT02-S05-53 | 950 | RT01/RT02-D05-53 | 600 |
| RT01/RT02-S05-58 | 1100 | RT01/RT02-D05-58 | 640 |
| RT01/RT02-S05-63 | 1304 | RT01/RT02-D05-63 | 680 |
| RT01/RT02-S05-68 | 1550 | RT01/RT02-S05-68 | 850 |
| RT01/RT02-S06-68 | 1900 | RT01/RT02-D06-68 | 1030 |
| RT01/RT02-S06-73 | 1850 | RT01/RT02-D06-73 | 1090 |
| RT01/RT02-S06-80 | 2000 | RT01/RT02-D06-80 | 1200 |
| RT01/RT02-S06-85 | 2300 | RT01/RT02-S06-85 | 1360 |
| RT01/RT02-S07-80 | 2700 | RT01/RT02-D07-80 | 1650 |
| RT01/RT02-S07-90 | 3100 | RT01/RT02-D07-90 | 1800 |
| RT01/RT02-S07-100 | 3500 | RT01/RT02-S07-100 | 2100 |
| RT01/RT02-S08-100 | 4200 | RT01/RT02-D08-100 | 2450 |
| RT01/RT02-S08-120 | 6800 | RT01/RT02-S08-120 | 5200 |

本数据仅供参考，如有更改，恕不另行通知！

This data is for reference only, subject to change without notice!

以上数据仅供参考，最终以双方确认图纸为准。Dates For Reference ,The Final Object With Customer Confirmation.



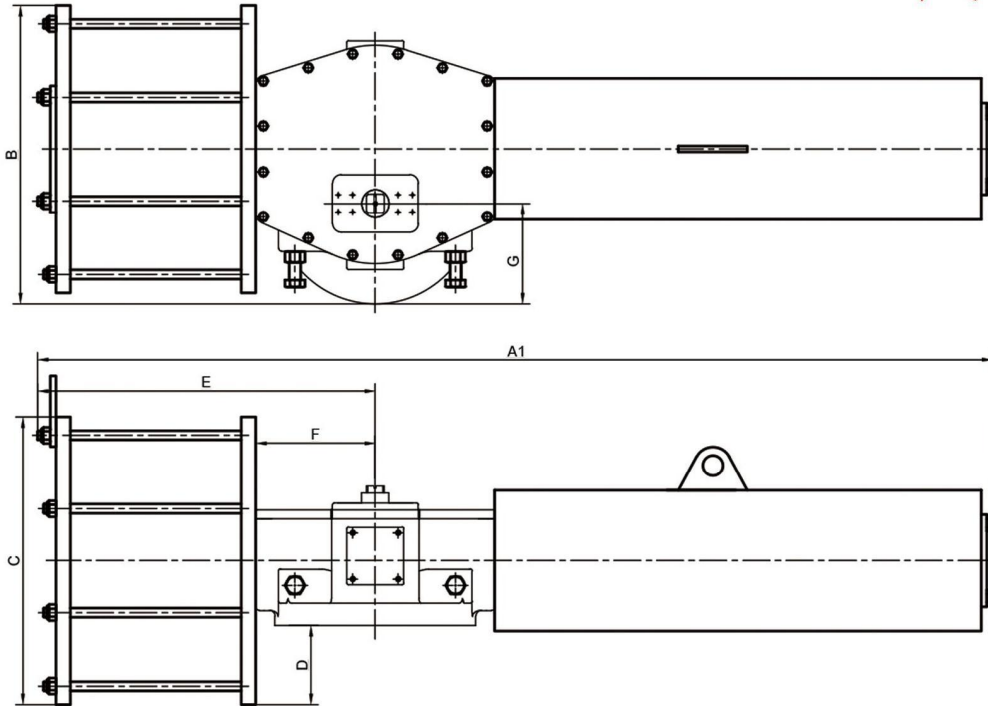
▼ 双作用/对称和倾斜的数据
Double Acting / Symmetric and Canted Data

| Model 型号 | A | A1 | | B | C | D | E | F | G | H | I | J |
|-------------------|------|---------|---------|-------|-------|-----|------|-----|-------|------|----|-------|
| | | 4.0 Bar | 5.0 Bar | | | | | | | | | |
| RT01/02-D/S01-18 | 564 | 884 | 909 | 243.5 | ∅196 | 11 | 407 | 127 | 87.5 | ∅40 | 12 | 43.3 |
| RT01/02-D/S01-20 | 564 | 930 | 945 | 252.5 | ∅214 | 20 | 407 | 127 | 87.5 | ∅40 | 12 | 43.3 |
| RT01/02-D/S01-25 | 564 | 970 | 990 | 278.5 | ∅266 | 46 | 407 | 127 | 87.5 | ∅40 | 12 | 43.3 |
| RT01/02-D/S02-25 | 727 | 1259 | 1289 | 314 | ∅266 | 35 | 517 | 175 | 105 | ∅50 | 14 | 53.8 |
| RT01/02-D/S02-30 | 736 | 1328 | 1339 | 341 | ∅320 | 62 | 526 | 175 | 105 | ∅50 | 14 | 53.8 |
| RT01/02-D/S02-35 | 727 | 1361 | 1376 | 391 | ∅420 | 112 | 517 | 175 | 105 | ∅50 | 14 | 53.8 |
| RT01/02-D/S03-35 | 832 | 1535 | 1545 | 480 | ∅420 | 97 | 588 | 208 | 175 | ∅80 | 20 | 84.9 |
| RT01/02-D/S03-38 | 832 | 1557 | 1616 | 495 | ∅450 | 112 | 588 | 208 | 175 | ∅80 | 20 | 84.9 |
| RT01/02-D/S03-43 | 832 | 1601 | 1663 | 520 | ∅500 | 137 | 588 | 208 | 175 | ∅80 | 20 | 84.9 |
| RT01/02-D/S04-43 | 1050 | 1902 | 1924 | 580.5 | ∅510 | 98 | 740 | 265 | 207.5 | ∅90 | 25 | 95.4 |
| RT01/02-D/S04-48 | 1050 | 1952 | 2074 | 605.5 | ∅560 | 123 | 740 | 265 | 207.5 | ∅90 | 25 | 95.4 |
| RT01/02-D/S04-53 | 1050 | 1999 | 2004 | 630.5 | ∅610 | 148 | 740 | 265 | 207.5 | ∅90 | 25 | 95.4 |
| RT01/02-D/S05-53 | 1360 | 2348 | 2383 | 687.5 | ∅610 | 141 | 985 | 330 | 237.5 | ∅120 | 32 | 127.4 |
| RT01/02-D/S05-58 | 1360 | 2383 | 2439 | 722.5 | ∅680 | 176 | 985 | 330 | 237.5 | ∅120 | 32 | 127.4 |
| RT01/02-D/S05-63 | 1360 | 2597 | 2691 | 752.5 | ∅740 | 206 | 985 | 330 | 237.5 | ∅120 | 32 | 127.4 |
| RT01/02-D/S05-68 | 1360 | 2617 | 2705 | 777.5 | ∅790 | 231 | 985 | 330 | 237.5 | ∅120 | 32 | 127.4 |
| RT01/02-D/S06-68 | 1594 | 3085 | 3155 | 814.5 | ∅790 | 185 | 1127 | 415 | 237.5 | ∅150 | 36 | 158.4 |
| RT01/02-D/S06-73 | 1594 | 3147 | 3225 | 839.5 | ∅840 | 210 | 1127 | 415 | 237.5 | ∅150 | 36 | 158.4 |
| RT01/02-D/S06-80 | 1594 | 3247 | 3291 | 884.5 | ∅930 | 255 | 1127 | 415 | 237.5 | ∅150 | 36 | 158.4 |
| RT01/02-D/S06-85 | 1637 | 3317 | 3372 | 864.5 | ∅890 | 235 | 1170 | 415 | 237.5 | ∅150 | 36 | 158.4 |
| RT01/02-D/S07-80 | 1965 | 3955 | 4035 | 948 | ∅856 | 199 | 1410 | 500 | 280 | ∅190 | 45 | 200.4 |
| RT01/02-D/S07-90 | 1965 | 4050 | 4160 | 993 | ∅946 | 244 | 1410 | 500 | 280 | ∅190 | 45 | 200.4 |
| RT01/02-D/S07-100 | 1965 | 4180 | 4306 | 1043 | ∅1046 | 294 | 1410 | 500 | 280 | ∅190 | 45 | 200.4 |
| RT01/02-D/S08-100 | 2310 | 4880 | 4990 | 1186 | ∅1046 | 240 | 1620 | 630 | 343 | ∅250 | 56 | 262.4 |
| RT01/02-D/S08-120 | 2310 | 5090 | 5210 | 1288 | ∅1250 | 342 | 1620 | 630 | 343 | ∅250 | 56 | 262.4 |

以上数据仅供参考，最终以双方确认图纸为准。Dates For Reference, The Final Object With Customer Confirmation.

尺寸数据

Dimension

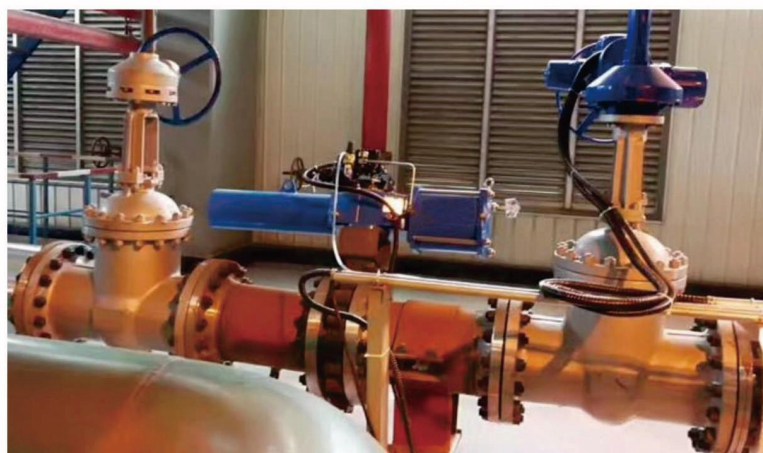
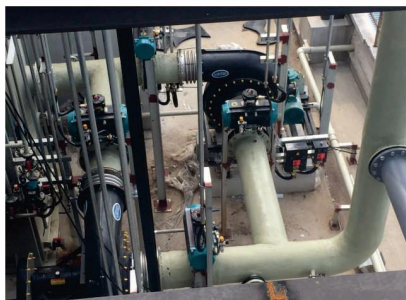
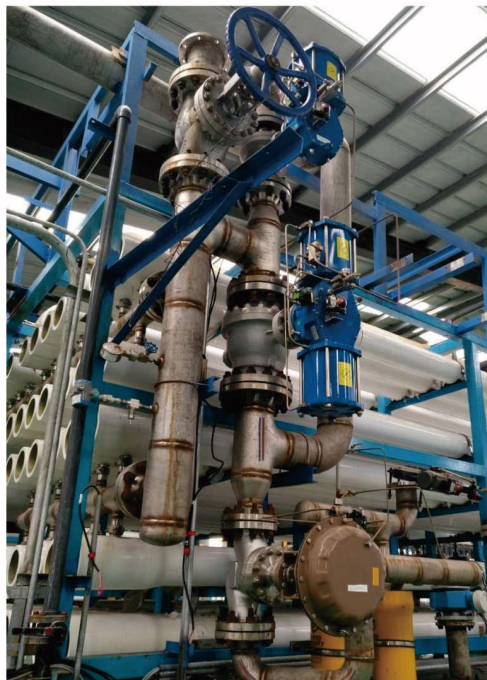


▼单作用/对称和倾斜的数据 Spring Return / Symmetric and Canted Data

| K1 | K2 | L1 | L2 | M | N | O | P | X | Y | Z | Air Connection 气源接口 |
|------|------|--------|--------|----|----|-----|----|-----|-----|-------|------------------------|
| ∅140 | | 4-M16 | | 30 | 80 | | 20 | 40 | 40 | 4-M6 | Rc 3/8" |
| ∅140 | | 4-M16 | | 30 | 80 | | 20 | 40 | 40 | 4-M6 | Rc 3/8" |
| ∅140 | | 4-M16 | | 30 | 80 | | 20 | 40 | 40 | 4-M6 | Rc 3/8" |
| ∅165 | | 4-M20 | | 30 | 80 | 130 | 30 | 80 | 80 | 4-M8 | Rc 3/8" |
| ∅165 | | 4-M20 | | 30 | 80 | 130 | 30 | 80 | 80 | 4-M8 | Rc 3/8" |
| ∅165 | | 4-M20 | | 30 | 80 | 130 | 30 | 80 | 80 | 4-M8 | Rc 1/2" |
| ∅254 | ∅298 | 8-M16 | 8-M20 | 30 | 80 | 130 | 30 | 80 | 80 | 4-M8 | Rc 3/4" |
| ∅254 | ∅298 | 8-M16 | 8-M20 | 30 | 80 | 130 | 30 | 80 | 80 | 4-M8 | Rc 3/4" |
| ∅254 | ∅298 | 8-M16 | 8-M20 | 30 | 80 | 130 | 30 | 80 | 80 | 4-M8 | Rc 3/4" |
| ∅298 | ∅356 | 8-M20 | 8-M30 | 30 | 80 | 130 | 30 | 100 | 100 | 4-M10 | Rc 1" |
| ∅298 | ∅356 | 8-M20 | 8-M30 | 30 | 80 | 130 | 30 | 100 | 100 | 4-M10 | Rc 1" |
| ∅298 | ∅356 | 8-M20 | 8-M30 | 30 | 80 | 130 | 30 | 100 | 100 | 4-M10 | Rc 1" |
| ∅356 | ∅406 | 8-M30 | 8-M36 | 30 | 80 | 130 | 30 | 100 | 100 | 4-M12 | Rc 1" |
| ∅356 | ∅406 | 8-M30 | 8-M36 | 30 | 80 | 130 | 30 | 100 | 100 | 4-M12 | Rc 1" |
| ∅356 | ∅406 | 8-M30 | 8-M36 | 30 | 80 | 130 | 30 | 100 | 100 | 4-M12 | Rc 1" |
| ∅356 | ∅406 | 8-M30 | 8-M36 | 30 | 80 | 130 | 30 | 100 | 100 | 4-M12 | Rc 1" |
| ∅406 | | 8-M36 | | 30 | 80 | 130 | 30 | 160 | 160 | 4-M12 | Rc 1" |
| ∅406 | | 8-M36 | | 30 | 80 | 130 | 30 | 160 | 160 | 4-M12 | Rc 1" |
| ∅406 | | 8-M36 | | 30 | 80 | 130 | 30 | 160 | 160 | 4-M12 | Rc 1-1/2" |
| ∅406 | | 8-M36 | | 30 | 80 | 130 | 30 | 160 | 160 | 4-M12 | Rc 1-1/2" |
| ∅406 | ∅483 | 8-M36 | 12-M36 | 30 | 80 | 130 | 30 | 180 | 180 | 4-M16 | Rc 1-1/2" |
| ∅406 | ∅483 | 8-M36 | 12-M36 | 30 | 80 | 130 | 30 | 180 | 180 | 4-M16 | Rc 1-1/2" |
| ∅406 | ∅483 | 8-M36 | 12-M36 | 30 | 80 | 130 | 30 | 180 | 180 | 4-M16 | Rc 1-1/2" |
| ∅483 | ∅603 | 12-M36 | 20-M36 | 30 | 80 | 130 | 30 | 200 | 200 | 4-M16 | Rc 1-1/2" |
| ∅483 | ∅603 | 12-M36 | 20-M36 | 30 | 80 | 130 | 30 | 200 | 200 | 4-M16 | Rc 1-1/2" |

以上数据仅供参考，最终以双方确认图纸为准。Dates For Reference ,The Final Object With Customer Confirmation.

应用行业
Application
Industry



北京凯姆斯智控科技有限公司

地 址：北京市大兴区长子营镇长恒路20号院
联东U谷-长子营科技园11号楼
电 话：+86-10-56370175
传 真：+86-10-56370179
网 站：www.chemsun.com
邮 箱：sales@chemsun.com

Chemsun Europe GmbH

Add : Schumannstraße 156, 63069
Offenbacham Main, Germany
Tel : +49(0)69 7598 636 0
Fax : +49(0)69 7598 636 88
Web : www.chemsun.de
E-mail : sales@chemsun.de